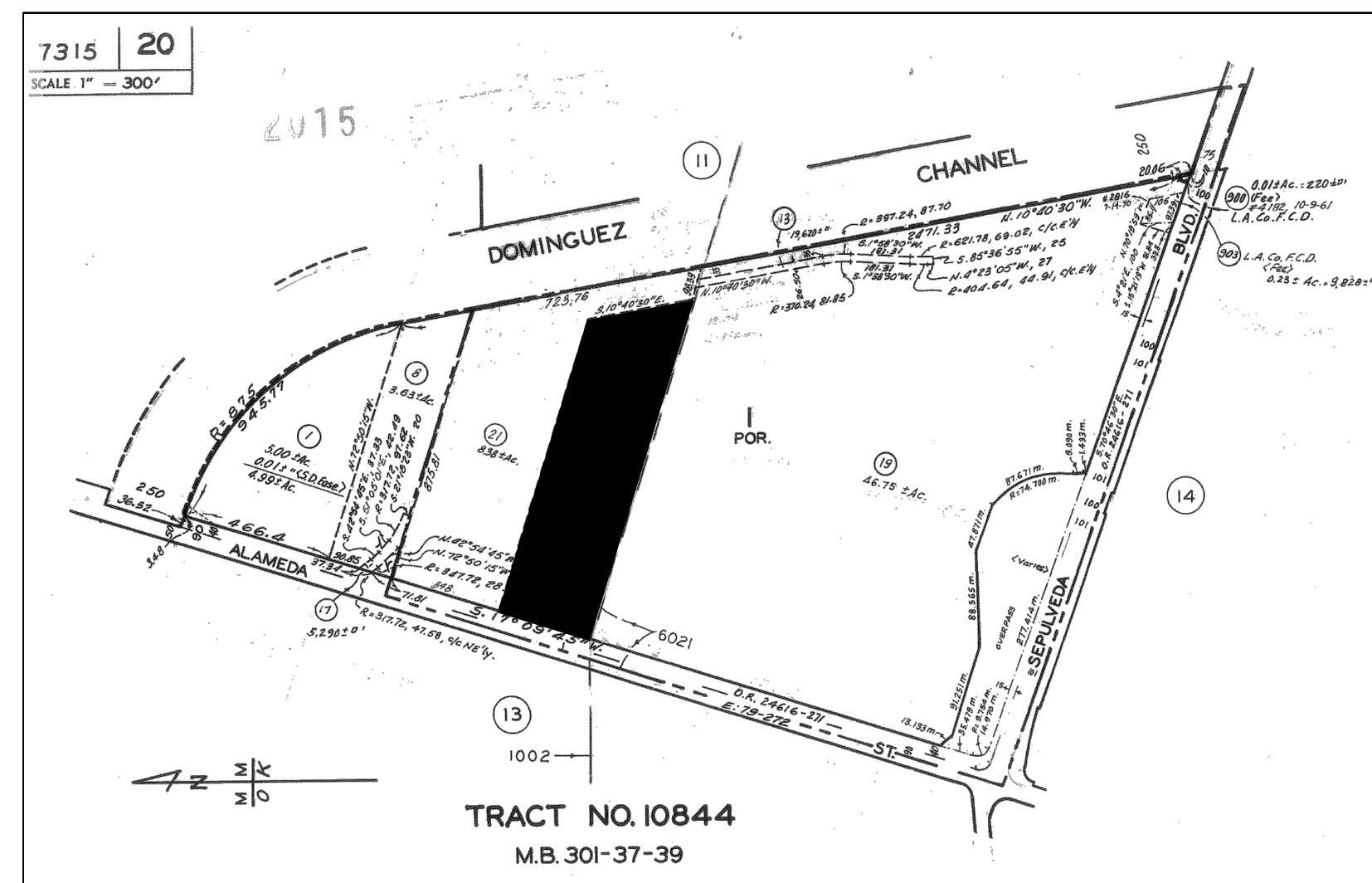


# AVOCET ENERGY STORAGE, LLC



**VICINITY MAP**  
SCALE = NTS



**PRELIMINARY - NOT  
FOR CONSTRUCTION**

## PROJECT DIRECTORY

**CONTACT:** MR. ARON BRANAM  
AREVON ENERGY  
VICE PRESIDENT, DEVELOPMENT AND CONSTRUCTION  
8800 N GAINES CENTER DR SUITE 250  
SCOTTSDALE, AZ 85258

**PERMITTING CONTACT:** MR. KEITH LATHAM  
TENASKA  
VICE PRESIDENT  
14302 FNB PKWY  
OMAHA, NE 68154

**PROJECT ADDRESS:** 23320 ALAMEDA STREET  
CARSON, CALIFORNIA 90810  
APN: 7315-020-022

**ENGINEER:** BURNS & McDONNELL ENGINEERING CO, INC  
9400 WARD PARKWAY  
KANSAS CITY, MO 64114  
816-333-9400

**LANDSCAPE ARCHITECT:** BURNS & McDONNELL ENGINEERING CO, INC  
9400 WARD PARKWAY  
KANSAS CITY, MO 64114  
816-333-9400

**ENVIRONMENTAL CONSULTANT:** DUDEK  
605 THIRD STREET  
ENCINITAS, CA 92024

## PROJECT DESCRIPTION

**GENERAL:** 200 MW  
BATTERY ENERGY STORAGE SYSTEM (BESS) FACILITY

**PRELIMINARY BUILDING AREA:** 303,178 SQ. FT

**ZONING:** MANUFACTURING HEAVY (MH)

DWG. NO.	TITLE
02A - SK101	SITE LAYOUT PLAN
02B - SK101	BESS EQUIPMENT DETAILS
03A - EXS101	ELEVATION LAYOUT SHEET 1
03B - EXS102	ELEVATION LAYOUT SHEET 2
04A - LSC101	LANDSCAPE PLAN
04B - LSC102	SIGNAGE DETAILS
04C - MWEL0	MODEL WATER EFFICIENT LANDSCAPE ORDINANCE
04D - SIGN APP	BUSINESS SIGN APPLICATION
05 - SKC001	GRADING PLAN
06 - ALTA	PRO-FORMA ALTA
07 - LIGHTING	LIGHTING AND SURVEILLANCE PLAN
08A - PHOTOSIM1	PHOTOSIMULATION 1
08B - PHOTOSIM2	PHOTOSIMULATION 2
08C - PHOTOSIM3	PHOTOSIMULATION 3
08D - PHOTOSIM4	PHOTOSIMULATION 4
08E - PHOTOSIM5	PHOTOSIMULATION 5
08F - PHOTOSIM6	PHOTOSIMULATION 6

no.	date	by	ckd	description	no.	date	by	ckd	description
A	11/03/21	SVL	-	ISSUED FOR CONDITIONAL USE PERMIT	E	04/21/23	SVL	ACR	ISSUED FOR CONDITIONAL USE PERMIT
B	1/28/22	SVL	-	ISSUED FOR CONDITIONAL USE PERMIT	F	06/01/23	EDV	ACR	ISSUED FOR CONDITIONAL USE PERMIT
C	9/20/22	SVL	-	ISSUED FOR CONDITIONAL USE PERMIT	G	06/19/23	EDV	ACR	ISSUED FOR CONDITIONAL USE PERMIT
D	12/20/22	SVL	-	ISSUED FOR CONDITIONAL USE PERMIT					

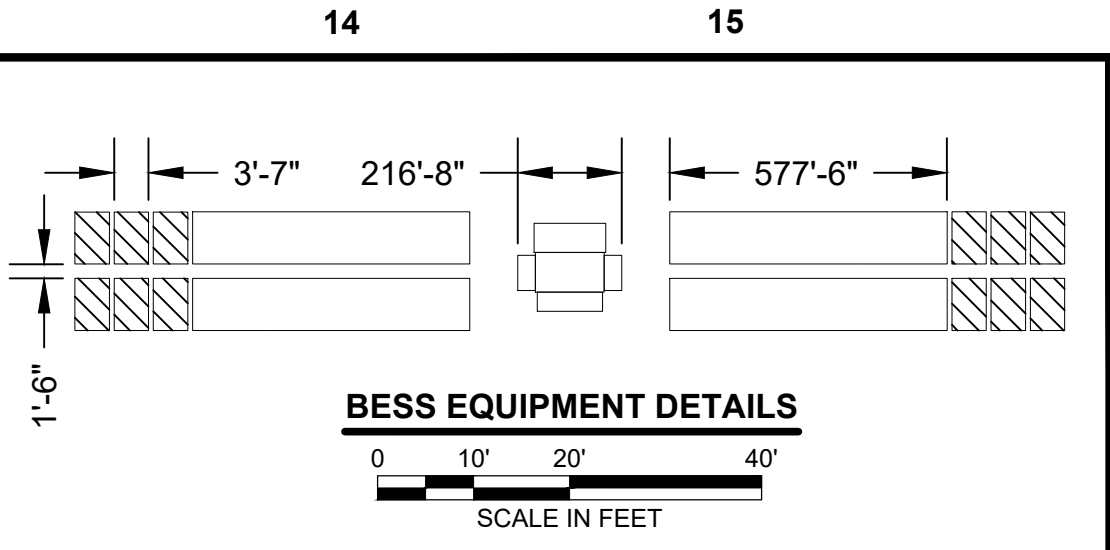
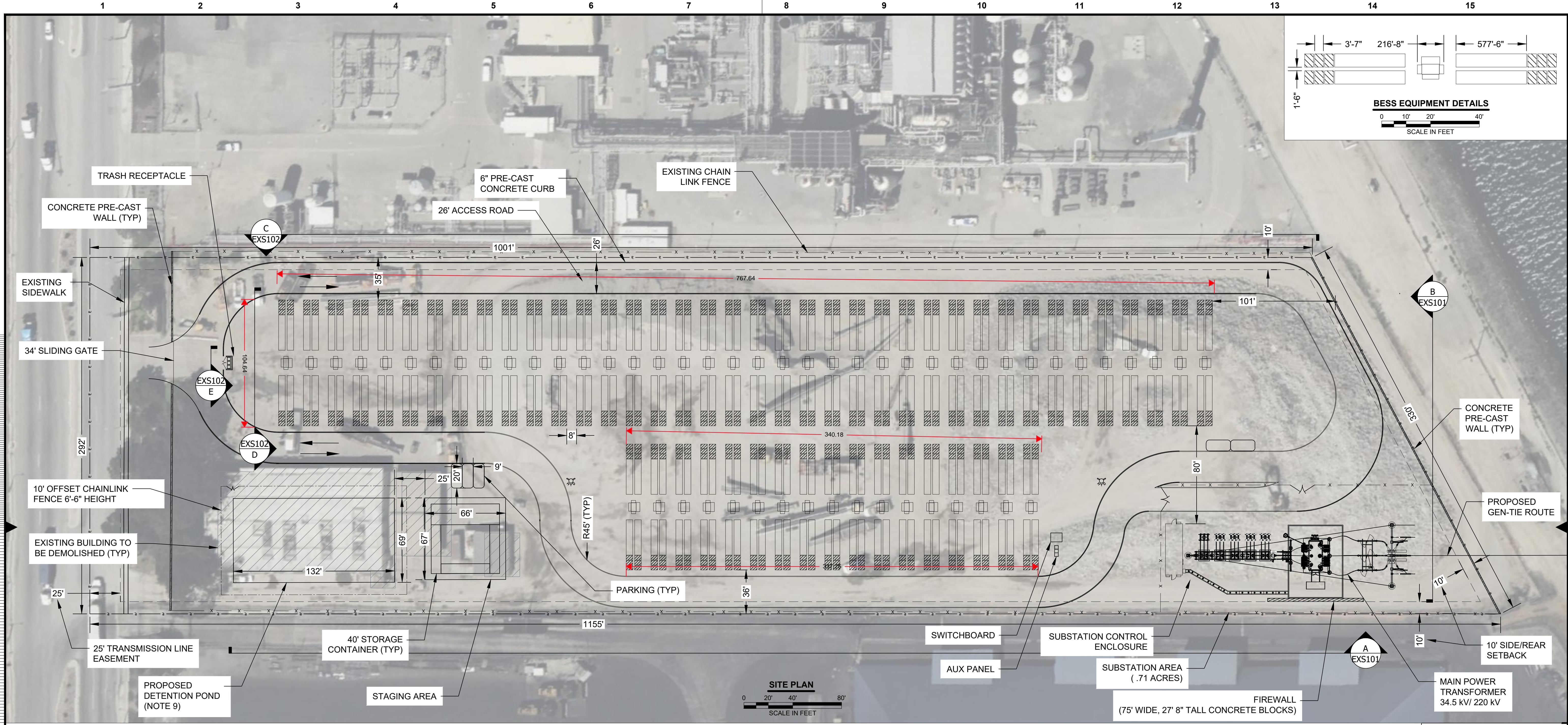


9400 WARD PARKWAY  
KANSAS CITY, MO 64114  
816-333-9400  
BURNS & MCDONNELL ENGINEERING COMPANY, INC.

**AVOCET  
ENERGY STORAGE, LLC**

# COVER SHEET





Scale For Microfining  
Inches  
Millimeters

**SITE PLAN**  
0 20' 40' 80'  
SCALE IN FEET

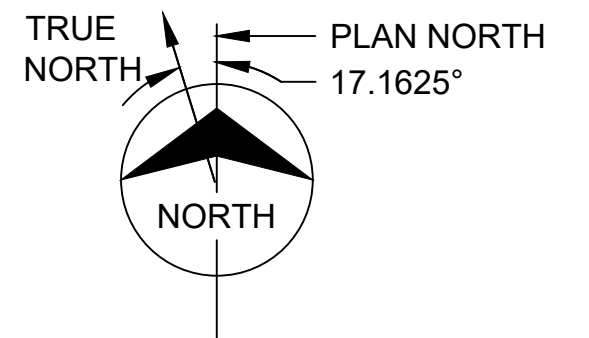
ENERGY STORAGE SYSTEM DESCRIPTION	
NAMEPLATE	200 MW
REQUIRED	PROPOSED
5 PARKING SPACES	5
7 LOADING AREAS	ALL AROUND ROAD ACCESS

AREA	ACREAGE (SQ FT)
PARCEL	314,858
BUILDABLE	303,178
LANDSCAPE	14,092
LANDSCAPE COVERAGE RATIO (LANDSCAPING / PARCEL)	4.48%

**ABBREVIATION LIST:**  
POI - POINT OF INTERCONNECTION  
BESS - BATTERY ENERGY STORAGE SYSTEM

- LEGEND:**
- e — e — PROPERTY LINE
  - x - x - EXISTING CHAIN LINK FENCE
  - o - o - EXISTING WROUGHT IRON FENCE
  - - - 6" CHAIN LINK FENCE
  - ▨ 8" - 6" PRE-CAST CONCRETE WALL
  - ROAD
  - GATE
  - FIRE HYDRANT

- NOTES:**
- FINAL LAYOUT SUBJECT TO CHANGE BASED ON FINAL ENVIRONMENTAL, CIVIL SETBACK DISTANCES, AND AUTHORITY HAVING JURISDICTION REQUIREMENTS.
  - EQUIPMENT QUANTITIES, CONFIGURATION, AND FOOTPRINT SUBJECT TO CHANGE BASED ON FINAL BESS TECHNOLOGY SELECTION, AND ADDITIONAL PROJECT DUE DILIGENCE.
  - CONSTRUCTION LAYDOWN, PARKING, TRAILERS, OPERATION AND MAINTENANCE BUILDINGS, ETC. NOT INCLUDED OR CONSIDERED IN DEVELOPMENT OF EQUIPMENT ARRANGEMENT SHOWN.
  - CIVIL GRADING NOT CONSIDERED IN LAYOUT DEVELOPMENT.
  - SITE PLAN SHALL MEET ALL ENGINEERING & NPDES REQUIREMENTS.
  - ALL GATES ON SITE TO BE EQUIPPED WITH FIRE DEPARTMENT APPROVED LOCKING DEVICE.
  - APPROXIMATELY 11,600 SF OF EXISTING BUILDING TO BE DEMOLISHED.
  - APN: 7315-020-022
  - MANUALLY OPERATED VALVE SHALL BE USED TO DEWATER DETENTION POND OUTLET.
  - DETENTION POND SIZING USED FOR BOTH STORM WATER RUNOFF OR FIRE WATER RUNOFF.



**PRELIMINARY - NOT FOR CONSTRUCTION**

E	05/26/23	EDV	ACR	ISSUED FOR REVIEW
D	4/21/23	SVL	ACR	ISSUED FOR REVIEW
C	3/15/23	JHP	ACR	ISSUED FOR REVIEW
B	3/9/23	SVL	ACR	ISSUED FOR REVIEW
A	2/24/23	SVL	ACR	ISSUED FOR REVIEW
no.	date	by	ckd	description

G	06/19/23	EDV	ACR	ISSUED FOR REVIEW
F	06/01/23	EDV	ACR	ISSUED FOR REVIEW
no.	date	by	ckd	description

**BURNS & MCDONNELL**

9400 WARD PARKWAY  
KANSAS CITY, MO 64114  
816-333-9400  
Burns & McDonnell Engineering Co., Inc.

designed S. LE | detailed S. LE

**TENASKA®**

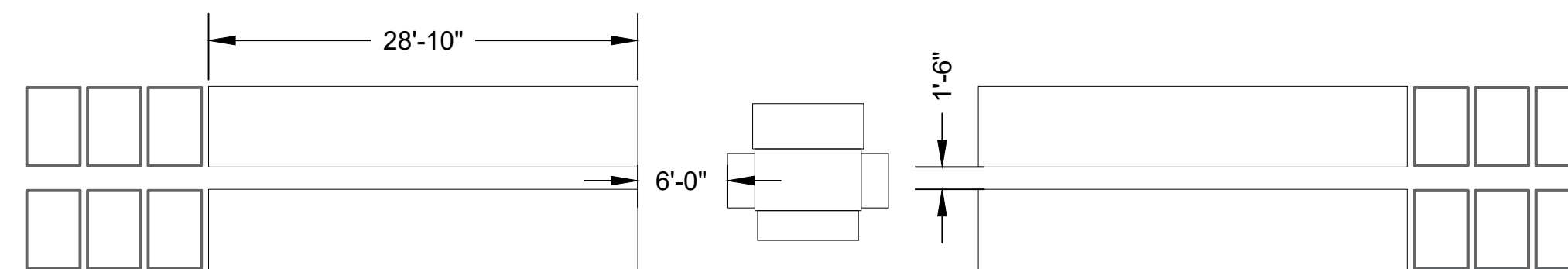
LOS ANGELES COUNTY, CALIFORNIA

AVOCET ENERGY STORAGE, LLC BESS SITE LAYOUT SITE PLAN	
project	contract
drawing	rev.
<b>SK101 - G</b>	
sheet 1 of 1	sheets
file Avocet Layout.dwg	

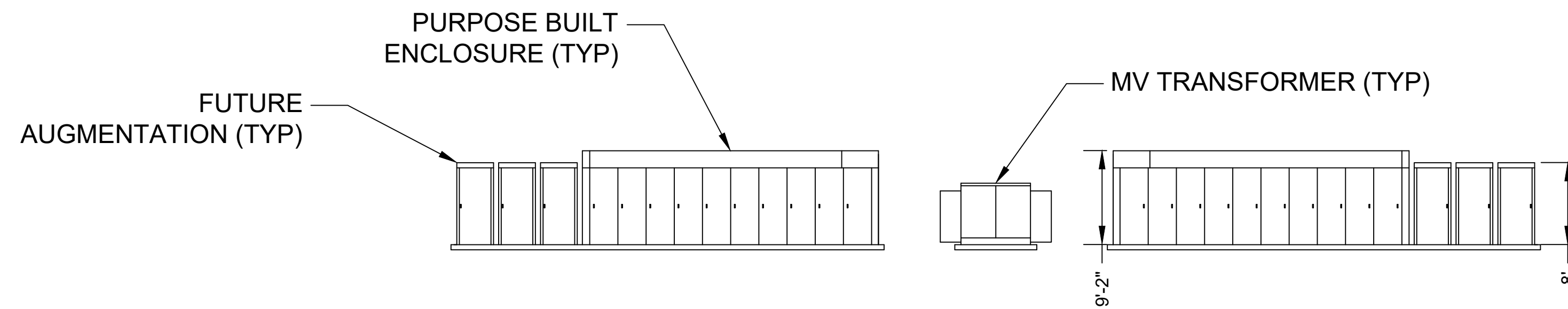


EQUIPMENT DIMENSIONS AND DETAILS					
EQUIPMENT	WIDTH	LENGTH	HEIGHT	RATING	VOLTAGE (V)
PURPOSE BUILT ENCLOSURE (BATTERIES)	65"	346.5"	110"	3800kWh	1-1.5kVDC 480VAC
FUTURE AUGMENTATION UNITS	43"	63"	96"	N/A	1-1.5kVDC 480VAC
PAD MOUNT TRANSFORMER	114"	91"	90"	4.4MVA	34.5kV - 480V
AUXILIARY POWER TRANSFORMER	88"	112"	72"	500kVA	34.5kV - 480V
SWITCHBOARD	36"	108"	60"	500kVA	480V
MAIN POWER TRANSFORMER	24'	29"	23'	175MVA	34.5kV - 230V
SUBSTATION CONTROL ENCLOSURE	14'	42"	9'	N/A	120-240V

**BESS EQUIPMENT DETAILS**



**BESS EQUIPMENT PLAN VIEW**



**BESS EQUIPMENT ELEVATION VIEW**

**NOTES:**

1. IT IS ACKNOWLEDGED THAT THE APPLICANT HAS NOT YET SELECTED THE PROJECT EQUIPMENT SUPPLIERS AND THEREFORE THE NUMBER OF EQUIPMENT UNITS, DIMENSIONS, AND LAYOUT WILL NOT BE ESTABLISHED UNTIL BUILDING PERMITS ARE FINALIZED. PROJECT EQUIPMENT SHALL BE LOCATED WITHIN THE IMPROVED PROJECT FOOTPRINT IN THE APPROVED SITE PLAN AND SHALL COMPLY WITH ALL AUTHORITIES HAVING JURISDICTION, INCLUDING THE PROJECT DETAILS IN THE CONDITIONS OF APPROVAL.

**PRELIMINARY - NOT FOR CONSTRUCTION**

Scale For Microfining  
Millimeters  
Inches

B	12/22/22	SVL	ACR	ISSUED FOR REVIEW	
A	9/20/22	SVL	DW	ISSUED FOR REVIEW	
no.	date	by	ckd	description	

no.	date	by	ckd	description	

**BURNS MCDONNELL**  
 9400 WARD PARKWAY  
 KANSAS CITY, MO 64114  
 816-333-9400  
 Burns & McDonnell Engineering Co., Inc.

designed S. LE | detailed S. LE

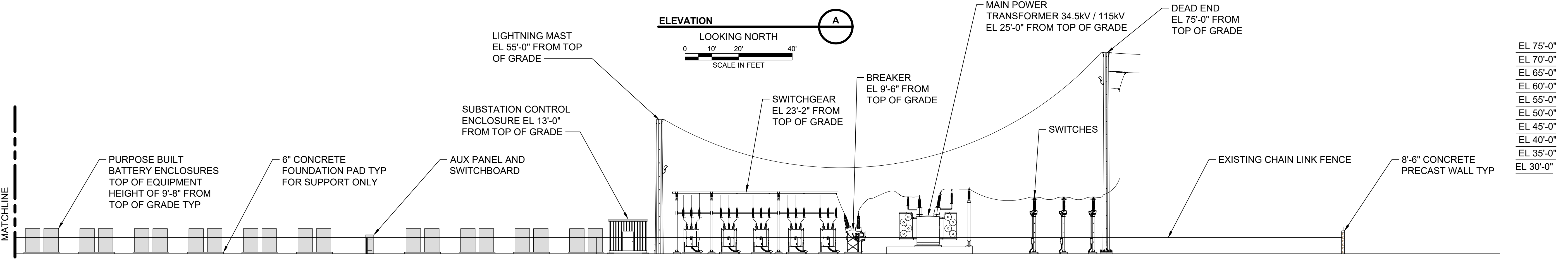
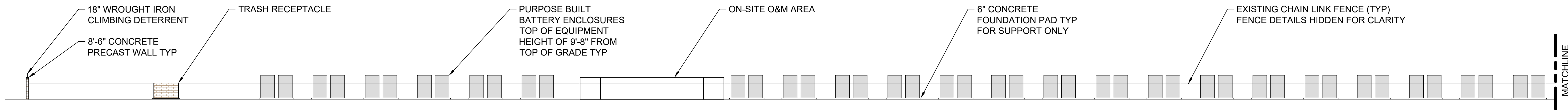
LOS ANGELES COUNTY, CALIFORNIA

AVOCET ENERGY STORAGE, LLC  
 BESS SITE LAYOUT  
 BESS EQUIPMENT DETAILS

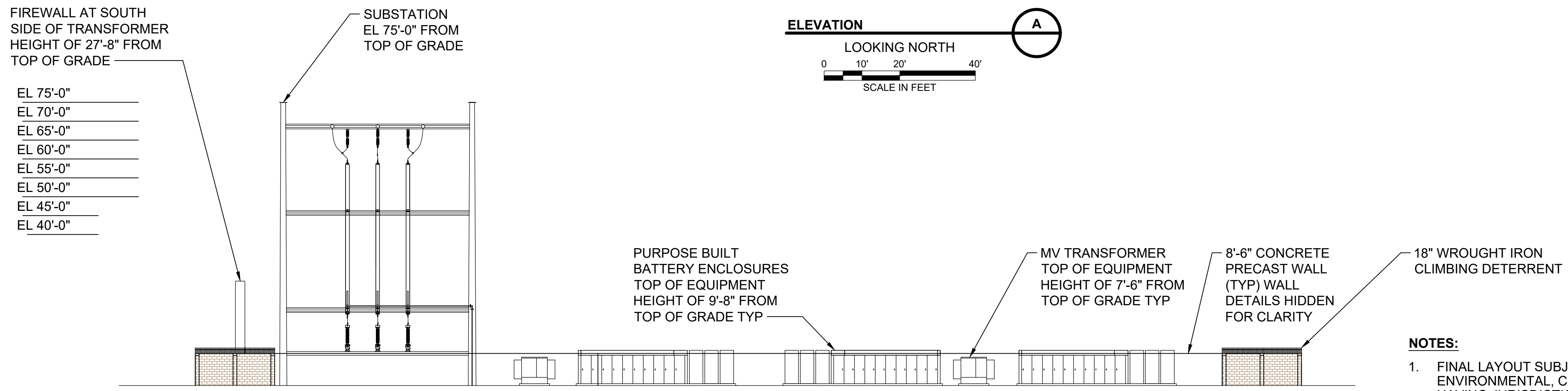
project | contract

drawing **SK101 - B** rev.

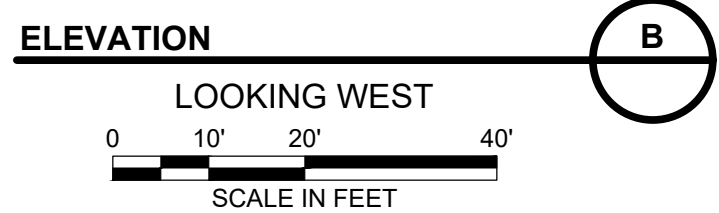
sheet 2 of 2 sheets  
 file Avocet\_Layout.dwg



- EL 75'-0"
- EL 70'-0"
- EL 65'-0"
- EL 60'-0"
- EL 55'-0"
- EL 50'-0"
- EL 45'-0"
- EL 40'-0"
- EL 35'-0"
- EL 30'-0"



**NOTES:**  
 1. FINAL LAYOUT SUBJECT TO CHANGE BASED ON FINAL ENVIRONMENTAL, CIVIL SETBACK DISTANCES, AND AUTHORITY HAVING JURISDICTION REQUIREMENTS.



**PRELIMINARY - NOT FOR CONSTRUCTION**

E	4/19/23	CCB	BG	ISSUED FOR CONDITIONAL USE PERMIT
D	12/20/22	BRS	SVL	ISSUED FOR CONDITIONAL USE PERMIT
C	9/20/22	BRS	SVL	ISSUED FOR CONDITIONAL USE PERMIT
B	1/28/22	BRS	SVL	ISSUED FOR CONDITIONAL USE PERMIT
A	10/28/21	BRS	SVL	ISSUED FOR CONDITIONAL USE PERMIT
no.	date	by	ckd	description

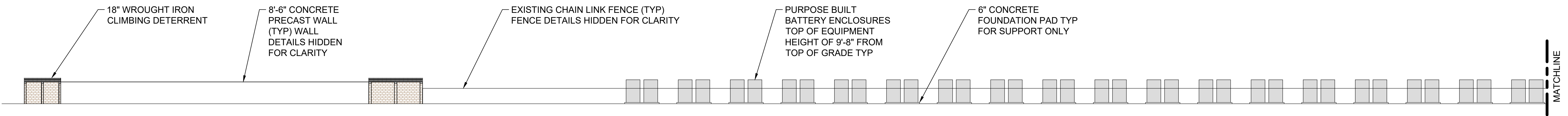
G	6/19/23	CCB	-	ISSUED FOR CONDITIONAL USE PERMIT
F	6/1/23	CCB	-	ISSUED FOR CONDITIONAL USE PERMIT
no.	date	by	ckd	description

**BURNS & MCDONNELL**  
 9400 WARD PARKWAY  
 KANSAS CITY, MO 64114  
 816-333-9400  
 Burns & McDonnell Engineering Co., Inc.

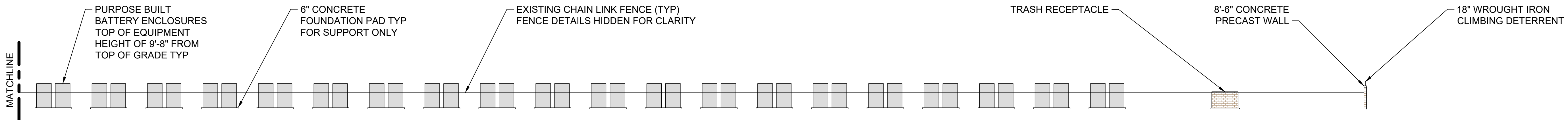
designed: C. BRYAN  
 detailed: C. BRYAN

LOS ANGELES COUNTY, CALIFORNIA

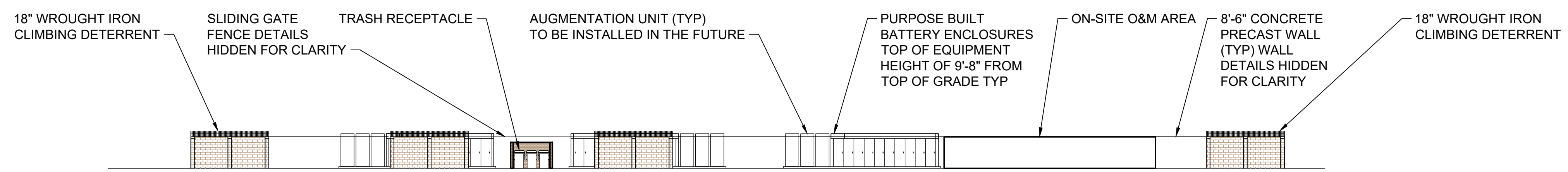
AVOCET ENERGY STORAGE, LLC	
ELEVATION LAYOUT SHEET 1	
project	contract
drawing	rev.
<b>EXS101 - G</b>	
sheet	of sheets
file EXS101.dwg	



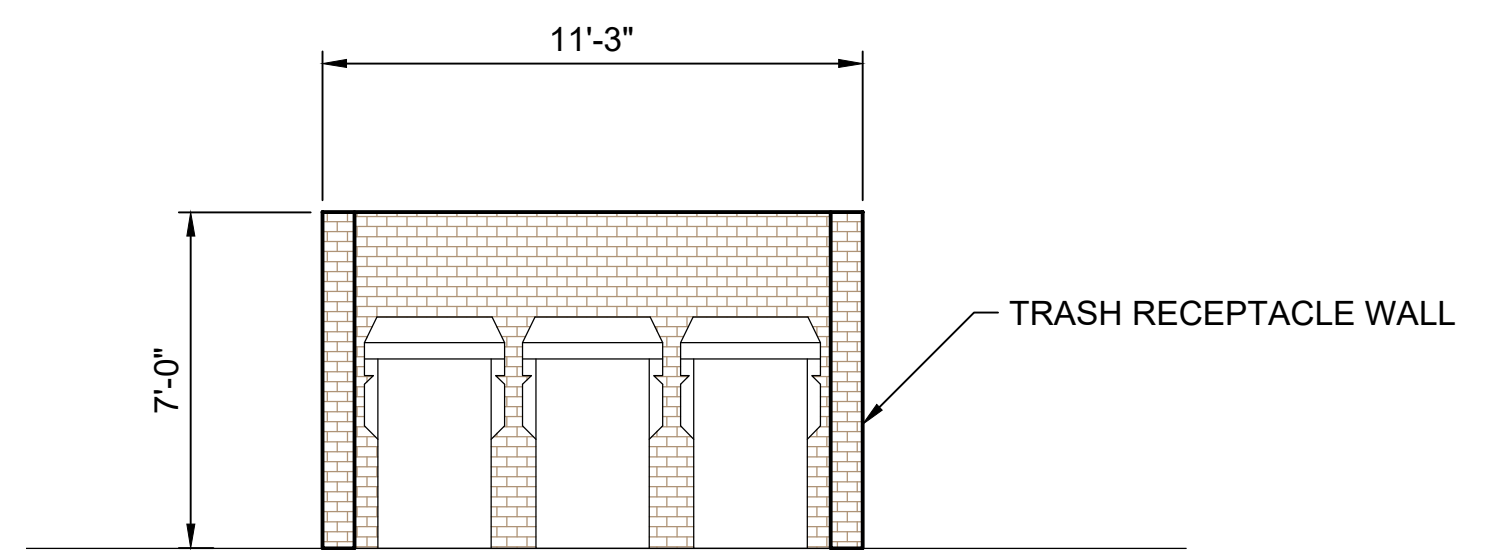
**ELEVATION C**  
 LOOKING SOUTH  
 0 10' 20' 40'  
 SCALE IN FEET



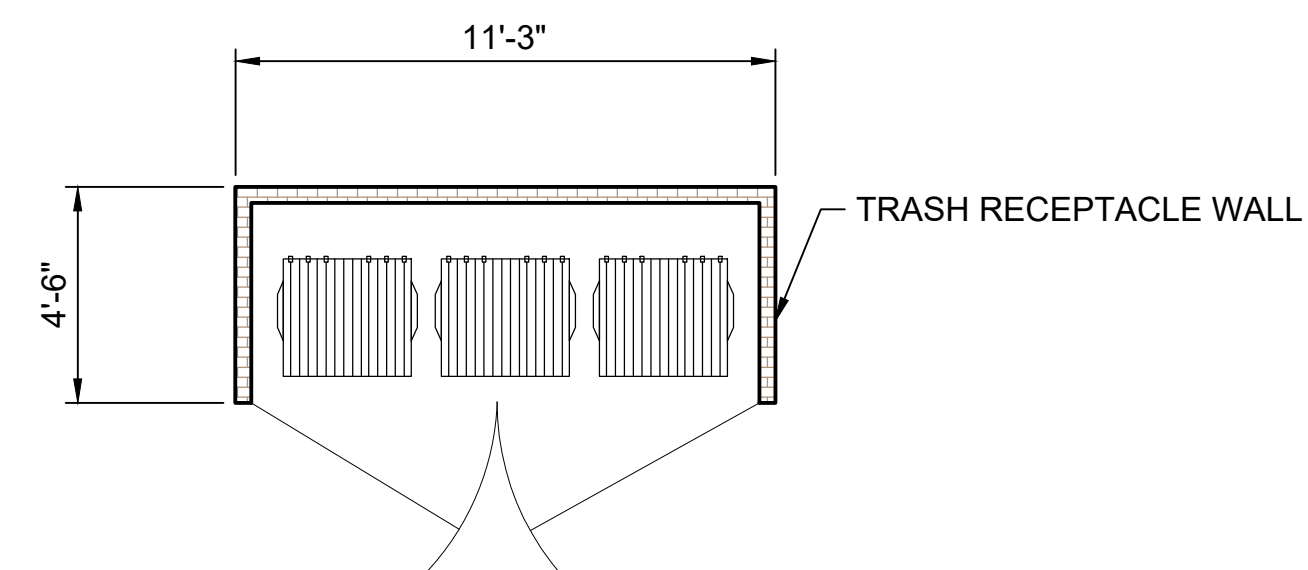
**ELEVATION C**  
 LOOKING SOUTH  
 0 10' 20' 40'  
 SCALE IN FEET



**ELEVATION D**  
 LOOKING EAST  
 0 10' 20' 40'  
 SCALE IN FEET



**ELEVATION E**  
 TRASH CONTAINER  
 VIEW LOOKING EAST  
 0 2' 4' 8'  
 SCALE IN FEET



**ENLARGED VIEW F**  
 TRASH CONTAINER  
 VIEW LOOKING PLAN  
 0 2' 4' 8'  
 SCALE IN FEET

**NOTES:**  
 1. FINAL LAYOUT SUBJECT TO CHANGE BASED ON FINAL ENVIRONMENTAL, CIVIL SETBACK DISTANCES, AND AUTHORITY HAVING JURISDICTION REQUIREMENTS.

**PRELIMINARY - NOT FOR CONSTRUCTION**

E	4/19/23	CCB	BG	ISSUED FOR CONDITIONAL USE PERMIT					
D	12/20/22	BRS	SVL	ISSUED FOR CONDITIONAL USE PERMIT					
C	9/20/22	BRS	SVL	ISSUED FOR CONDITIONAL USE PERMIT					
B	1/28/22	BRS	SVL	ISSUED FOR CONDITIONAL USE PERMIT	G	6/19/23	CCB	-	ISSUED FOR CONDITIONAL USE PERMIT
A	10/28/21	BRS	SVL	ISSUED FOR CONDITIONAL USE PERMIT	F	6/1/23	CCB	-	ISSUED FOR CONDITIONAL USE PERMIT
no.	date	by	ckd	description	no.	date	by	ckd	description

**BURNS & MCDONNELL**  
 9400 WARD PARKWAY  
 KANSAS CITY, MO 64114  
 816-333-9400  
 Burns & McDonnell Engineering Co., Inc.

designed: C. BRYAN  
 detailed: C. BRYAN

LOS ANGELES COUNTY, CALIFORNIA

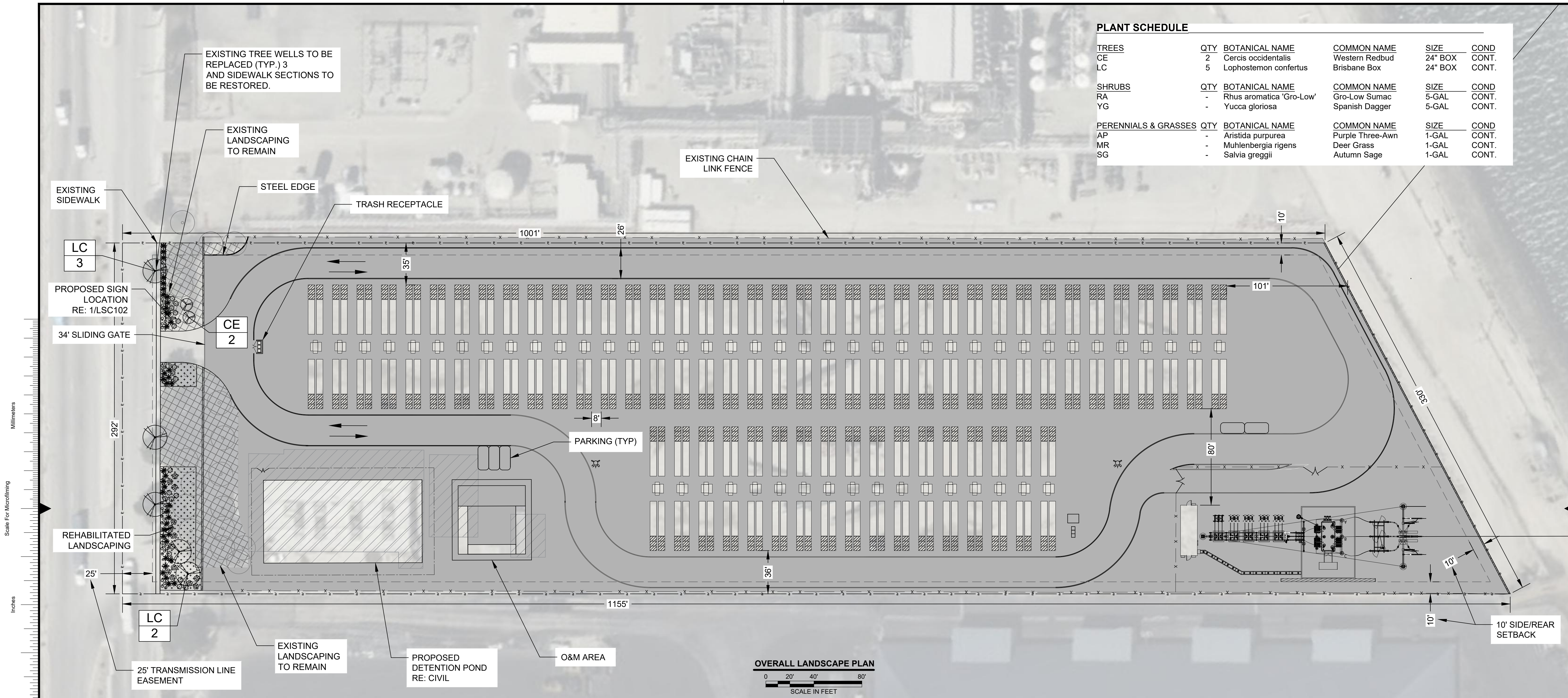
AVOCET ENERGY STORAGE, LLC  
 ELEVATION LAYOUT  
 SHEET 2

project	contract
drawing	rev.
<b>EXS102 - G</b>	
sheet	of sheets
file EXS102.dwg	



**PLANT SCHEDULE**

TREES	QTY	BOTANICAL NAME	COMMON NAME	SIZE	COND
CE	2	Cercis occidentalis	Western Redbud	24" BOX	CONT.
LC	5	Lophostemon confertus	Brisbane Box	24" BOX	CONT.
SHRUBS	QTY	BOTANICAL NAME	COMMON NAME	SIZE	COND
RA	-	Rhus aromatica 'Gro-Low'	Gro-Low Sumac	5-GAL	CONT.
YG	-	Yucca gloriosa	Spanish Dagger	5-GAL	CONT.
PERENNIALS & GRASSES	QTY	BOTANICAL NAME	COMMON NAME	SIZE	COND
AP	-	Aristida purpurea	Purple Three-Awn	1-GAL	CONT.
MR	-	Muhlenbergia rigens	Deer Grass	1-GAL	CONT.
SG	-	Salvia greggii	Autumn Sage	1-GAL	CONT.



Scale For Microfining  
Inches  
Millimeters

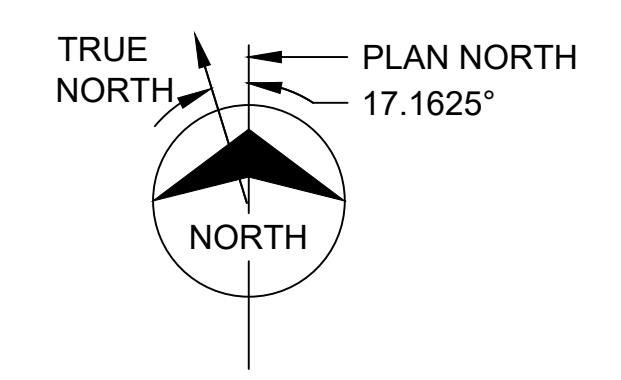
AREA	ACREAGE (SQ FT)
PARCEL	314,858
BUILDABLE	303,178
EXISTING LANDSCAPE TO REMAIN (FRONT YARD)	10,073
REHABILITATED LANDSCAPE (FRONT YARD)	4,019
TOTAL LANDSCAPE	14,092
LANDSCAPE COVERAGE RATIO (LANDSCAPING / PARCEL)	14,092/314,858= 4.48%

**LEGEND:**

	PROPERTY LINE
	EXISTING CHAIN LINK FENCE
	EXISTING WROUGHT IRON FENCE
	GATE
	EXISTING TREE TO REMAIN
	PROPOSED TREE
	EXISTING LANDSCAPING
	REHABILITATED LANDSCAPING
	GRAVEL; RE: CIVIL

- NOTES:**
1. FINAL LAYOUT SUBJECT TO CHANGE BASED ON FINAL ENVIRONMENTAL AND CIVIL SETBACK DISTANCES.
  2. SITE PLAN SHALL MEET ALL ENGINEERING & NPDES REQUIREMENTS.
  3. APN: 7315-020-022
  4. PRIMARY PURPOSE OF EXISTING VEGETATION IS FOR SCREENING FROM R.O.W. AND TO MEET CITY FRONT YARD REQUIREMENTS.
  5. EXISTING FRONT YARD PLANTING BEDS SHALL BE REHABILITATED WITH LOW WATER USE CLIMATE ADAPTED PLANTS TO IMPROVE STREETScape VIEW AND PROVIDE ADDITIONAL SCREENING.
  6. A MINIMUM THREE (3) INCHES OF MULCH SHALL BE APPLIED TO ALL PLANTING AREAS.
  7. REHABILITATED LANDSCAPE AREAS TO INCORPORATE COMPOST AT A RATE OF AT LEAST 4 CUBIC YARDS PER 1,000 SQ FT. TO A DEPTH OF 6 INCHES.
  8. EXISTING STREET TREE WELLS TO BE REPLACED AND RESTORED WITH PROPOSED TREES AND SHALL MEET CITY REQUIREMENTS.
  9. EXISTING IRRIGATION SYSTEM TO BE FIELD VERIFIED.
  10. ALL NEW PLANTINGS SHALL BE IRRIGATED WITH THE PERMANENT SYSTEM THAT MEETS CITY REQUIREMENTS.

**ABBREVIATION LIST:**  
POI - POINT OF INTERCONNECTION  
BESS - BATTERY ENERGY STORAGE SYSTEM



**PRELIMINARY - NOT FOR CONSTRUCTION**

no.	date	by	ckd	description
B	06/01/23	RG	BMS	ISSUED FOR REVIEW
A	04/21/23	RG	BMS	ISSUED FOR REVIEW

**BURNS MEDONNELL**  
9400 WARD PARKWAY  
KANSAS CITY, MO 64114  
816-333-9400  
Burns & McDonnell Engineering Co., Inc.

designed: R. GARCIA  
detailed: R. GARCIA

**TENASKA**  
LOS ANGELES COUNTY, CALIFORNIA

AVOCET ENERGY STORAGE, LLC  
BESS SITE LAYOUT  
OVERALL LANDSCAPE PLAN

project: \_\_\_\_\_ contract: \_\_\_\_\_  
drawing: **LSC101 - B** rev. \_\_\_\_\_  
sheet 1 of 2 sheets  
file: Avocet Layout.dwg





ENTERANCE AREA  
LANDSCAPING

ADJACENT  
NORTH  
PROPERTY

AVOCET ENERGY  
STORAGE, LLC

DEADEND  
STRUCTURE

BATTERY  
ENCLOSURE

TRASH  
RECEPTACLE

SLIDING GATE

PRECAST  
CONCRETE  
WALL

PROJECT  
DRIVEWAY

ALAMEDA ST

Millimeters  
Scale For Microfining  
Inches

A  
B  
C  
D  
E  
F  
G  
H

**POST-DEVELOPMENT**  
PHOTOSIMULATION OF PROJECT SITE  
FROM ALAMEDA STREET LOOKING EAST

**PRELIMINARY - NOT  
FOR CONSTRUCTION**

no.	date	by	ckd	description	no.	date	by	ckd	description
C	06/19/23	EDV	ACR	ISSUED FOR CONDITIONAL USE PERMIT					
B	06/01/23	EDV	ACR	ISSUED FOR CONDITIONAL USE PERMIT					
A	5/1/23	SVL	ACR	ISSUED FOR CONDITIONAL USE PERMIT					

**BURNS  
MCDONNELL**

9400 WARD PARKWAY  
KANSAS CITY, MO 64114  
816-333-9400  
Burns & McDonnell Engineering Co, Inc.

designed  
E. VILA

detailed  
E. VILA

**TENASKA®**

LOS ANGELES COUNTY, CALIFORNIA

AVOCET ENERGY STORAGE, LLC 3D RENDERING AND PHOTOSIMULATIONS	
project	contract
drawing	rev. <b>C</b>
sheet 1 of 1	sheets
file 3D Renderings AerialSite	





Millimeters  
 Scale For Microfining  
 Inches

**POST-DEVELOPMENT  
 AERIAL RENDERING LOOKING  
 NORTHWEST FROM ABOVE  
 DOMINGUEZ CHANNEL**

**PRELIMINARY - NOT  
 FOR CONSTRUCTION**

no.	date	by	ckd	description
C	06/19/23	EDV	ACR	ISSUED FOR CONDITIONAL USE PERMIT
B	06/01/23	EDV	ACR	ISSUED FOR CONDITIONAL USE PERMIT
A	5/1/23	SVL	ACR	ISSUED FOR CONDITIONAL USE PERMIT

no.	date	by	ckd	description

**BURNS  
 McDONNELL**

9400 WARD PARKWAY  
 KANSAS CITY, MO 64114  
 816-333-9400  
 Burns & McDonnell Engineering Co., Inc.

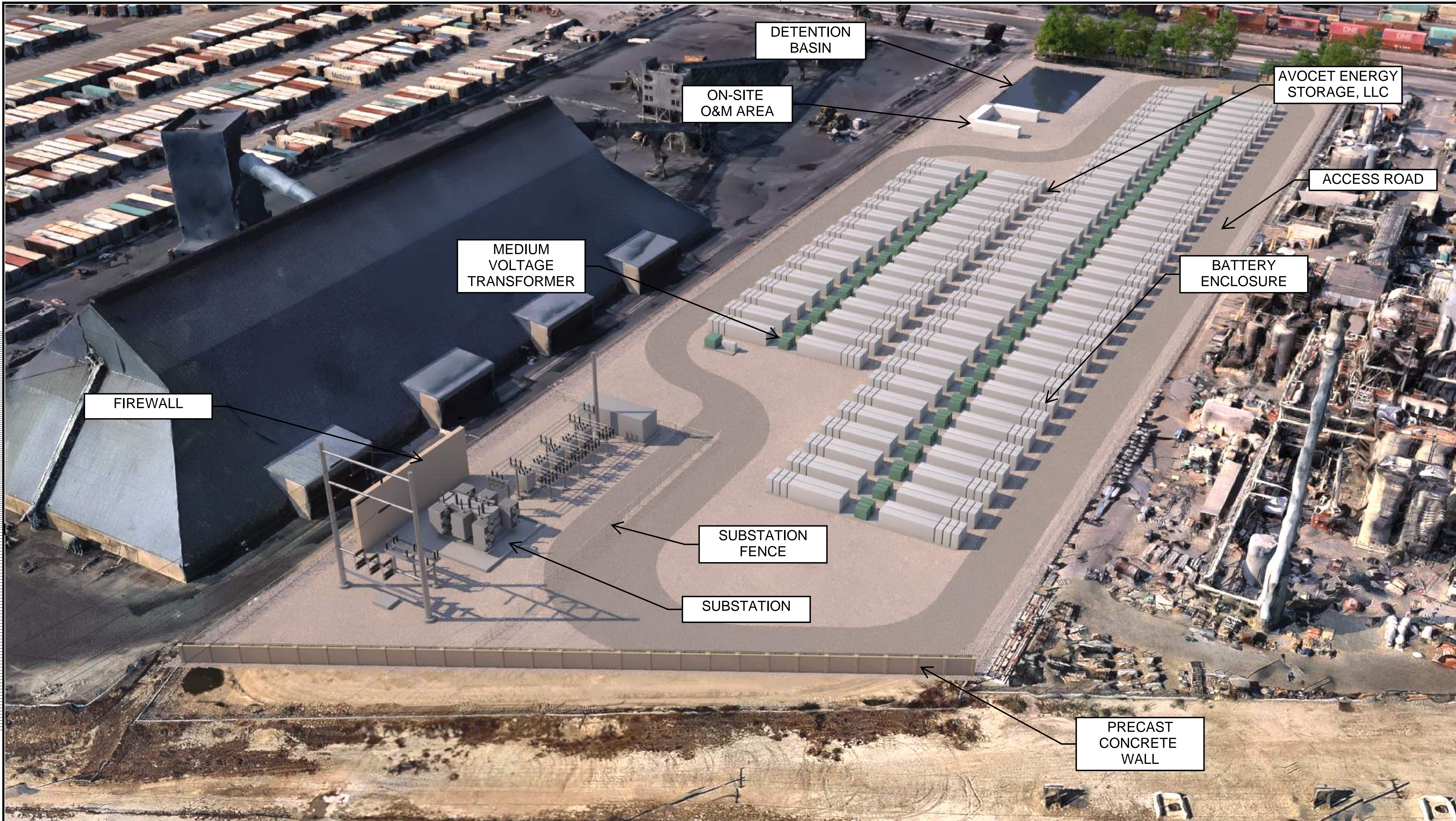
designed E. VILA  
 detailed E. VILA

**TENASKA®**

LOS ANGELES COUNTY, CALIFORNIA

AVOCET ENERGY STORAGE, LLC 3D RENDERING AND PHOTOSIMULATIONS	
project	contract
drawing	rev. <b>C</b>
sheet 1 of 1 sheets	file 3D Renderings AerialSite





POST-DEVELOPMENT  
AERIAL RENDERING LOOKING  
SOUTHWEST FROM ABOVE  
DOMINGUEZ CHANNEL

**PRELIMINARY - NOT  
FOR CONSTRUCTION**

no.	date	by	ckd	description
C	06/19/23	EDV	ACR	ISSUED FOR CONDITIONAL USE PERMIT
B	06/01/23	EDV	ACR	ISSUED FOR CONDITIONAL USE PERMIT
A	5/1/23	SVL	ACR	ISSUED FOR CONDITIONAL USE PERMIT

no.	date	by	ckd	description

**BURNS  
MCDONNELL**

9400 WARD PARKWAY  
KANSAS CITY, MO 64114  
816-333-9400  
Burns & McDonnell Engineering Co., Inc.

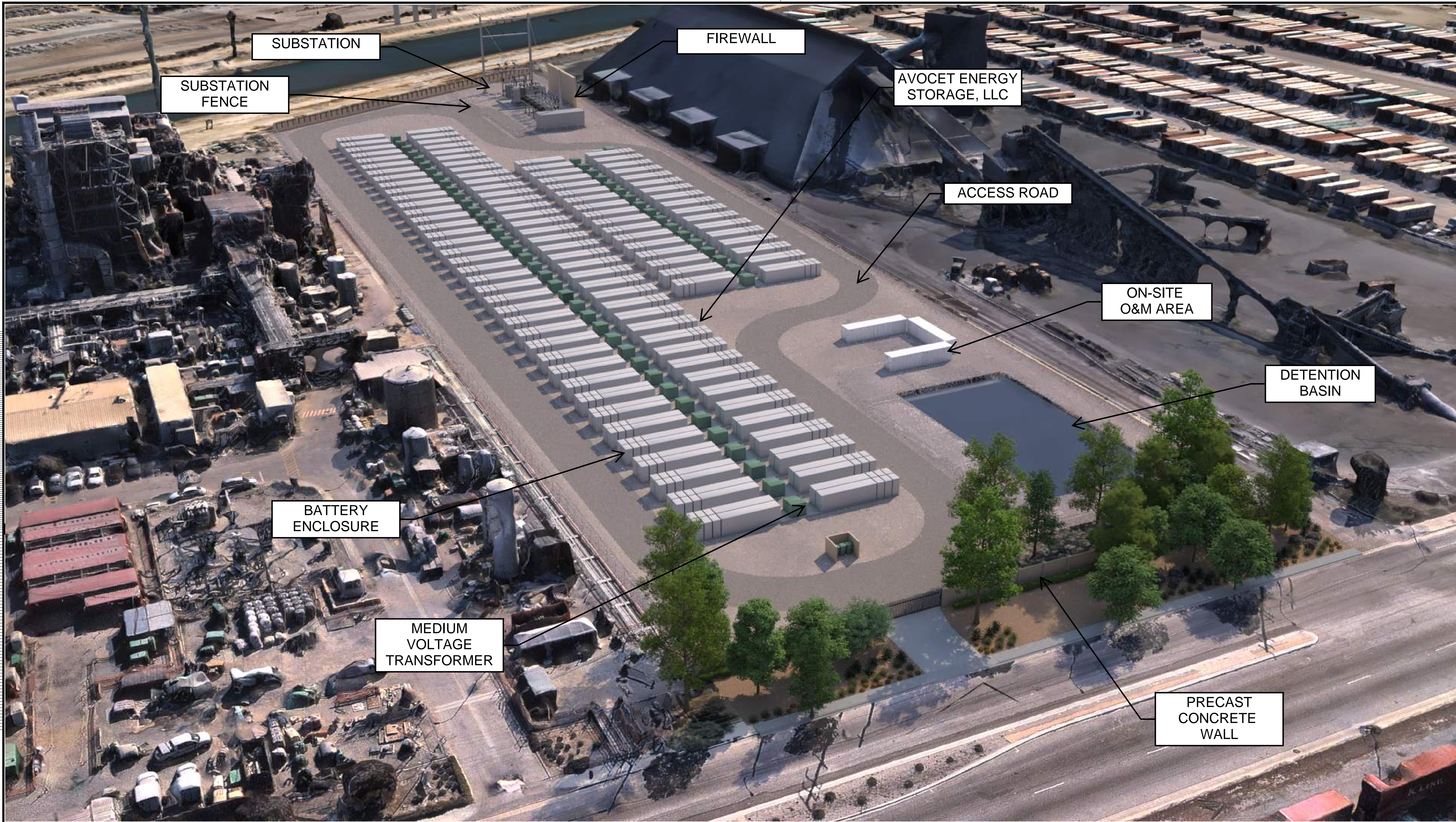
designed E. VILA | detailed E. VILA

**TENASKA®**

LOS ANGELES COUNTY, CALIFORNIA

AVOCET ENERGY STORAGE, LLC 3D RENDERING AND PHOTOSIMULATIONS	
project	contract
drawing	rev. <b>C</b>
sheet 1 of 1 sheets	file 3D Renderings AerialSite





Millimeters  
 Scale For Microfining  
 Inches

**POST-DEVELOPMENT**  
 AERIAL RENDERING LOOKING  
 SOUTHEAST FROM ABOVE  
 ALAMEDA STREET

**PRELIMINARY - NOT FOR CONSTRUCTION**

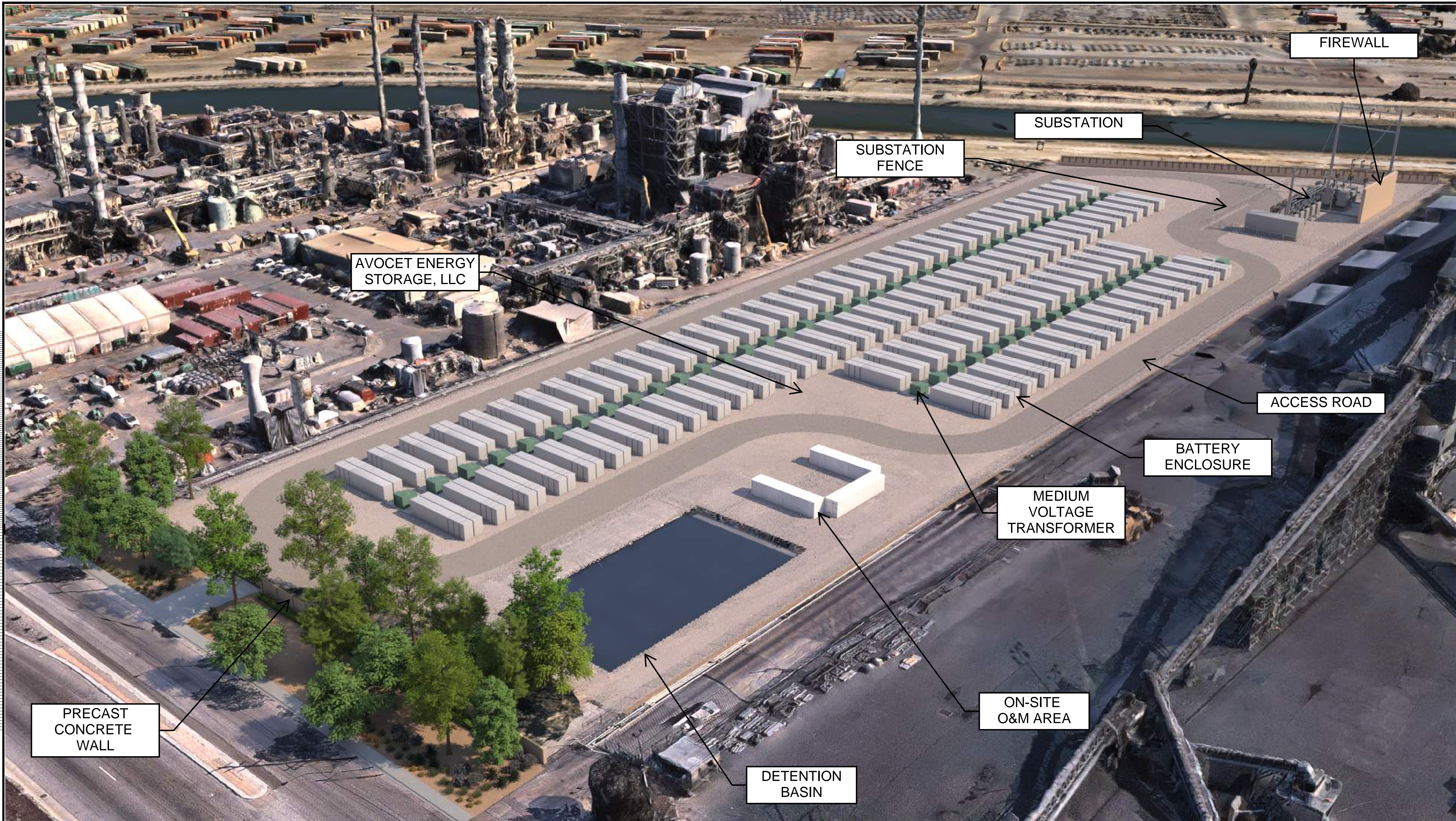
no.	date	by	ckd	description	no.	date	by	ckd	description
C	06/19/23	EDV	ACR	ISSUED FOR CONDITIONAL USE PERMIT					
B	06/01/23	EDV	ACR	ISSUED FOR CONDITIONAL USE PERMIT					
A	5/1/23	SVL	ACR	ISSUED FOR CONDITIONAL USE PERMIT					

**BURNS MEDONNELL**  
 9400 WARD PARKWAY  
 KANSAS CITY, MO 64114  
 816-333-9400  
 Burns & McDonnell Engineering Co., Inc.  
 designed E. VILA | detailed E. VILA

**TENASKA**<sup>®</sup>  
 LOS ANGELES COUNTY, CALIFORNIA

AVOCET ENERGY STORAGE, LLC	
3D RENDERING AND PHOTOSIMULATIONS	
project	contract
drawing	rev. <b>C</b>
sheet 1 of 1	sheets
file 3D Renderings AerialSite	





POST-DEVELOPMENT  
AERIAL RENDERING LOOKING  
NORTHEAST FROM ABOVE  
ALAMEDA STREET

**PRELIMINARY - NOT  
FOR CONSTRUCTION**

no.	date	by	ckd	description
C	06/19/23	EDV	ACR	ISSUED FOR CONDITIONAL USE PERMIT
B	06/01/23	EDV	ACR	ISSUED FOR CONDITIONAL USE PERMIT
A	5/1/23	SVL	ACR	ISSUED FOR CONDITIONAL USE PERMIT

**BURNS  
MCDONNELL**

9400 WARD PARKWAY  
KANSAS CITY, MO 64114  
816-333-9400  
Burns & McDonnell Engineering Co., Inc.

designed  
E. VILA

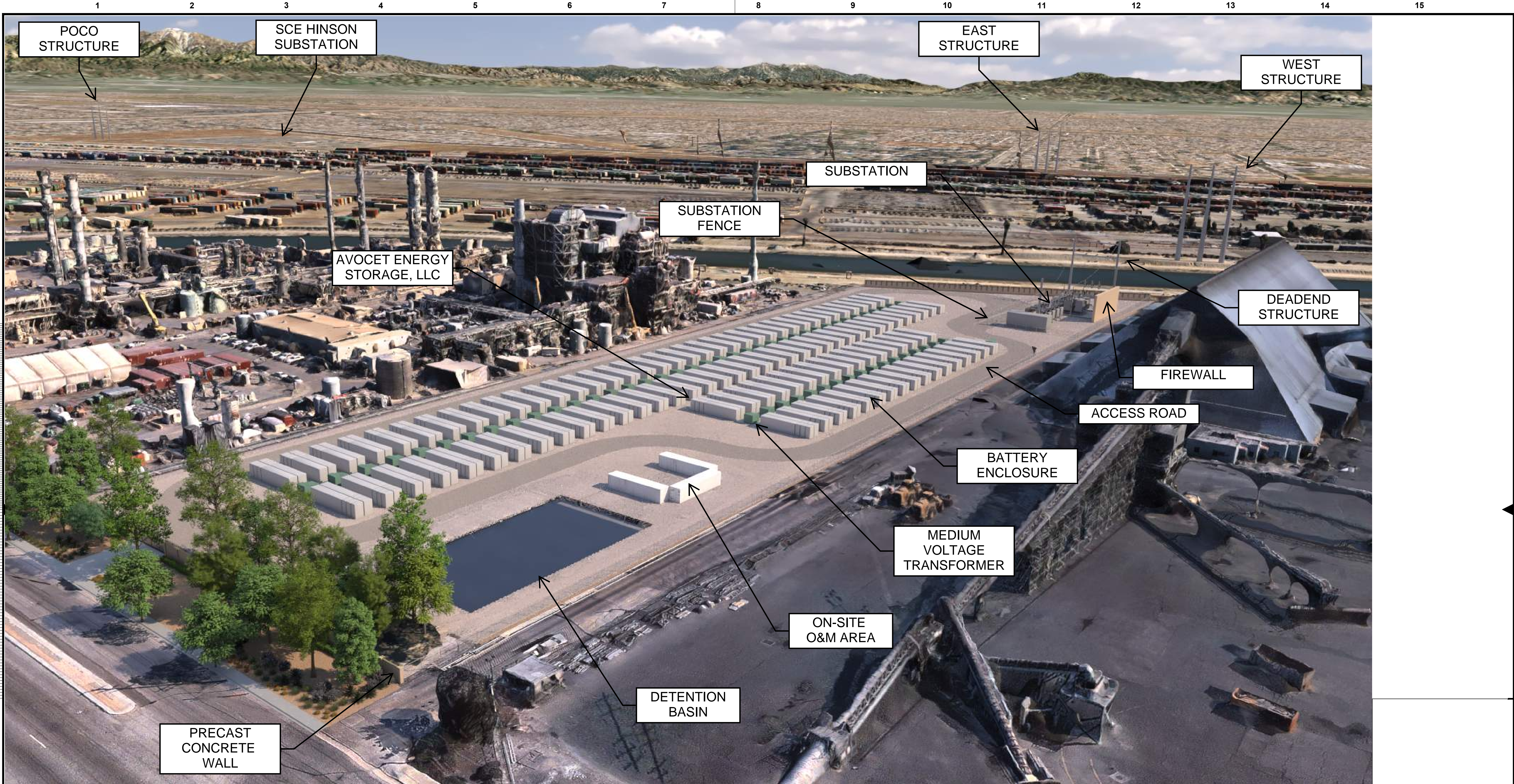
detailed  
E. VILA

**TENASKA®**

LOS ANGELES COUNTY, CALIFORNIA

AVOCET ENERGY STORAGE, LLC 3D RENDERING AND PHOTOSIMULATIONS	
project	contract
drawing	rev. <b>C</b>
sheet 1 of 1	sheets
file 3D Renderings AerialSite	





Scale For Microfining  
Millimeters  
Inches

POST-DEVELOPMENT  
AERIAL RENDERING LOOKING  
NORTHEAST FROM ABOVE  
DOMINGUEZ CHANNEL

PRELIMINARY - NOT  
FOR CONSTRUCTION

no.	date	by	ckd	description	no.	date	by	ckd	description
C	06/19/23	EDV	ACR	ISSUED FOR CONDITIONAL USE PERMIT					
B	06/01/23	EDV	ACR	ISSUED FOR CONDITIONAL USE PERMIT					
A	5/1/23	SVL	ACR	ISSUED FOR CONDITIONAL USE PERMIT					

**BURNS  
MCDONNELL**

9400 WARD PARKWAY  
KANSAS CITY, MO 64114  
816-333-9400  
Burns & McDonnell Engineering Co., Inc.

designed E. VILA  
detailed E. VILA

**TENASKA®**

LOS ANGELES COUNTY, CALIFORNIA

AVOCET ENERGY STORAGE, LLC 3D RENDERING AND PHOTOSIMULATIONS	
project	contract
drawing	rev. <b>C</b>
sheet 1 of 1 sheets	file 3D Renderings AerialSite